

# CERTIFICATE OF LOCATION OF GOVERNMENT CORNER

NORTHWEST Corner of Section 25, Township 107N, Range 40W

5th Principal Meridian, State of Minnesota, County of MURRAY

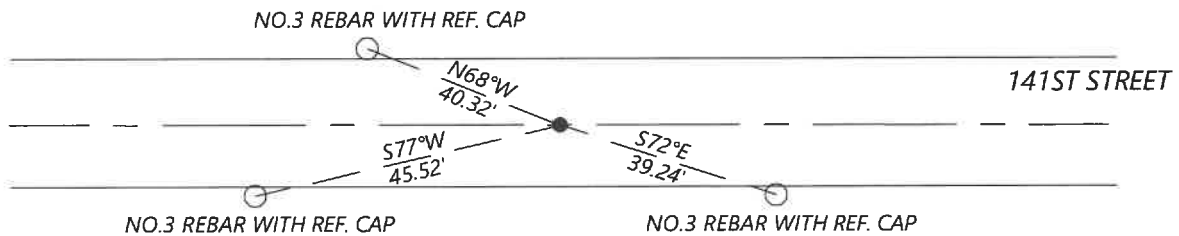
At the corner location shown on the sketch:

On 8/26/2020 found a REBAR WITH 1" ALUMINUM "DNR" CAP  
DATE

left monument as found       lowered monument       removed monument (explain)

On \_\_\_\_\_ placed a \_\_\_\_\_  
DATE

### SKETCH OF REFERENCE TIES



N.T.S.

Statement of evidence for this corner location is on back of this page.

I hereby certify that this document was researched and prepared by me or under my direct supervision and that I am a licensed Land Surveyor under the laws of the State of Minnesota.

Signature [Handwritten Signature]

Date 6/16/2021 License No. 45874

Title:

- Land Surveyor       Professional Engineer
- County Surveyor       County Engineer

### OFFICE OF THE COUNTY RECORDER

County of Murray

I hereby certify that this document was filed in the Co.

Recorder's office at \_\_\_\_\_ M. on the \_\_\_\_\_ day of \_\_\_\_\_ A.D. 20 \_\_\_\_\_

County Recorder [Handwritten Signature] by JUN 22 2021, Deputy

DOCUMENT NO. \_\_\_\_\_

**Statement of Evidence:**

Northwest Corner of Section 25, Township 107 North, Range 40 West, 5th Principal Meridian, Murray County, Minnesota.

*The DNR Bureau of Engineering contacted the following for survey information:*

*Secretary of State's Office*

*Murray County Recorder's Office and Highway Engineer's Office*

*Chicago and North Western Railway Office in St. Paul*

- 1861 *U.S. General Land Office notes obtained from the Secretary of State's Office show the corner marked with pits and mound.*
- 1898 *Surveyor's Record Book A, page 77, obtained from the County Recorder's Office contains a survey by J.W. Woolstencraft. Survey shows a government stake and a 6" by 6" by 18" stone at corner. The corner shown: 40.26 chains (2657.16') from the north quarter corner of Section 25.*
- 1934 *Surveyor's Record Book A, page 77, obtained from the County Recorder's Office contains corner information by F.A. March. A concrete stone is shown at corner by does not indicate if found or set. The following ties are shown to corner:*  
*R.P. tack in corner fence post, south, 25.3 feet*  
*R.P. tack in fence post, southwest, 41.3 feet*
- 1991 *May, The DNR Bureau of Engineering hired a backhoe to dig for evidence of corner. A pointed 2" by 2" by 1' long rotten wood stake was found down 2'. Also, found a 5" diameter by 18" long concrete monument with a "+" on top down 2.4'. The wood stake was not found over the concrete monument. Searched for but found no evidence of the record ties. The concrete monument was found to be:*  
*1 foot south of the centerline of an east-west road*  
*in line with a fence south*  
*in line with a vague field division north*  
*2657.62 feet from the north quarter corner of Section 25*

*Analysis of the above information led the DNR Bureau of Engineering to conclude that the found concrete monument marks the corner. Discarded the rotten wood stake.*

- 2020 *Westwood Professional Services searched and found iron with DNR cap per 1991 corner certificate. Set new reference ties.*

Analysis of the recovered data, field evidence and survey measurements, indicates that the monument found is the correct perpetuation of this corner. For additional information concerning this corner please contact Westwood Professional Services.